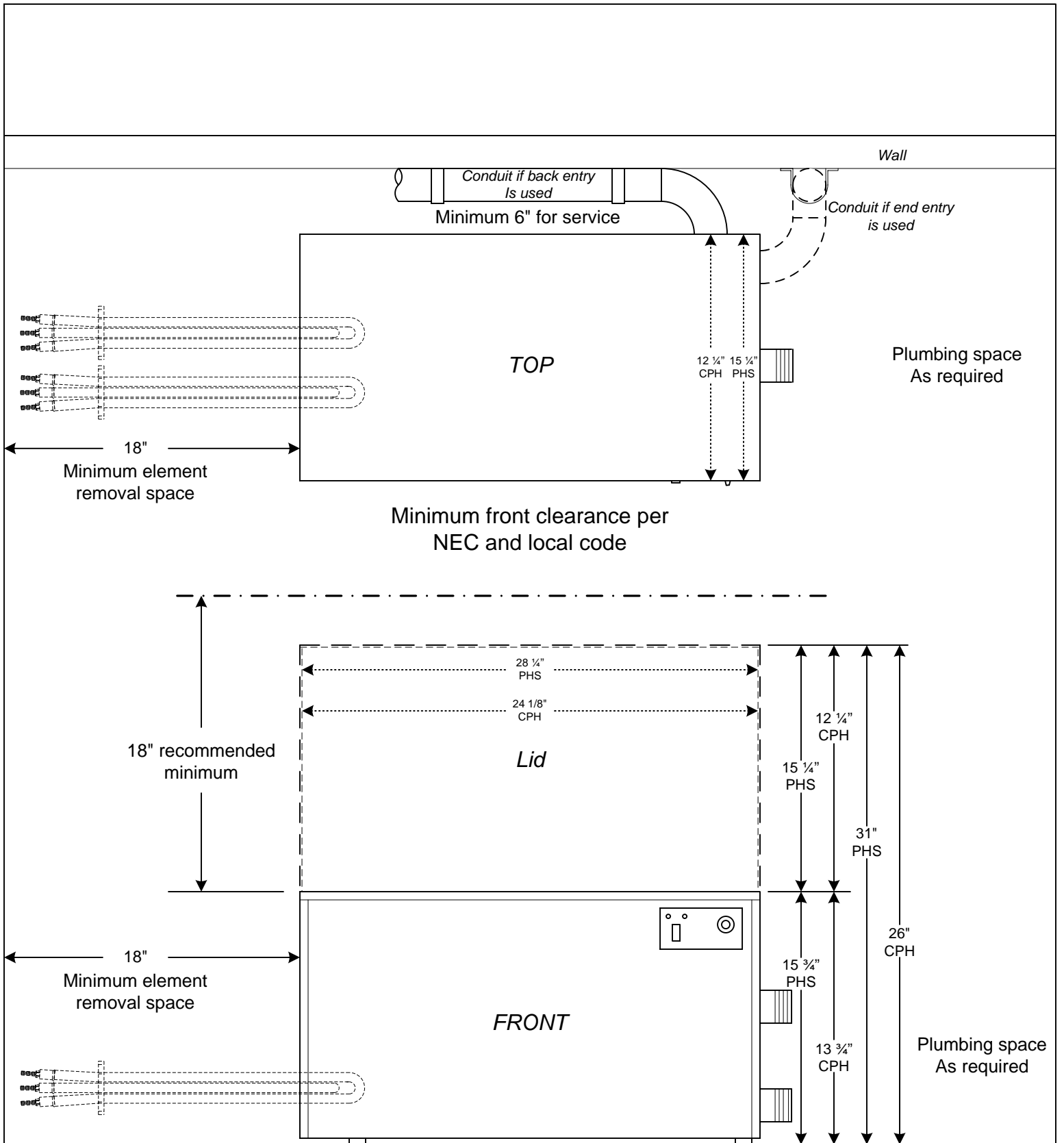
 HEATER COMPANY, INC. P.O. Box 1750 Kent WA 98035-1750		Clearances	
						Models:	
Rev.	Description	Date	By	R.E.W.	11 Oct. 2005		



HEATER COMPANY, INC.
P.O. Box 1750
Kent WA 98035-1750

Clearances

Models: CPH & PHS
24 & 30 kW,
36, 45, 54 & 57 kW

(60, 66 & 72 kW export only)

A	Added CPH	10/10 2005	REW
Rev.	Description	Date	By

R.E.W. 6 Oct. 2005